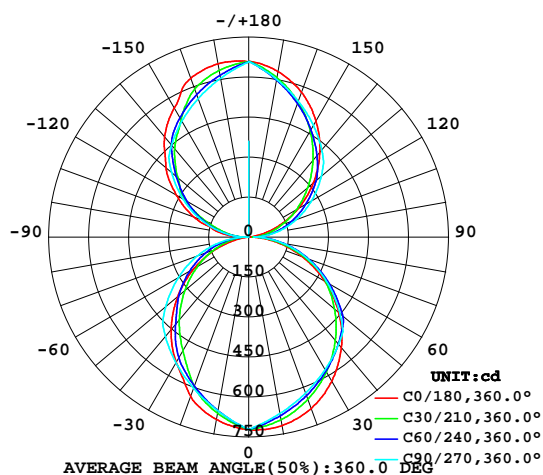


LUMINAIRE PHOTOMETRIC TEST REPORT

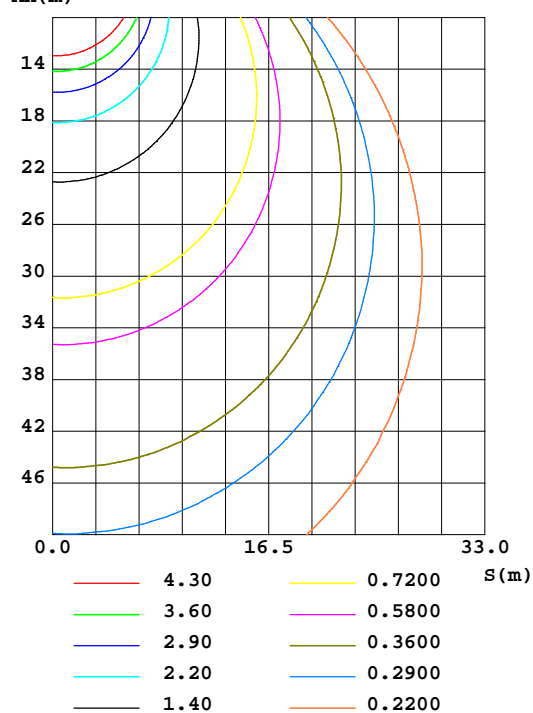
Test:U:121.4V I:0.2470A P:29.60W PF:0.9830 Lamp Flux:3633.21x1 lm		
NAME: 二代线条灯	TYPE:	WEIGHT:
DIM.: 4FT	SPEC.:3000K	SERIAL No.:认证样品
MFR.: YQ	SUR.:1.2*0.066m	PROTECTION ANGLE:

DATA OF LAMP		PHOTOMETRIC DATA Eff: 122.74 lm/W			
MODEL		I _{max} (cd)	724.4	S/MH(C0/180)	1.28
NOMINAL POWER(W)	30	LOR(%)	100.0	S/MH(C90/270)	1.20
RATED VOLTAGE(V)	122	TOTAL FLUX(lm)	3633.2	η UP,DN(C0-180)	23.2,27.3
NOMINAL FLUX(lm)	3633.21	CIE CLASS	DIFFUSE	η UP,DN(C180-360)	23.7,25.9
LAMPS INSIDE	1	η up(%)	46.8	CIBSE SHR NOM	1.25
TEST VOLTAGE(V)	121.5	η down(%)	53.2	CIBSE SHR MAX	1.30

LUMINOUS INTENSITY DISTRIBUTION DIAGRAM



C0 PLANE ISOLUX DIAGRAM (UNIT:lx)



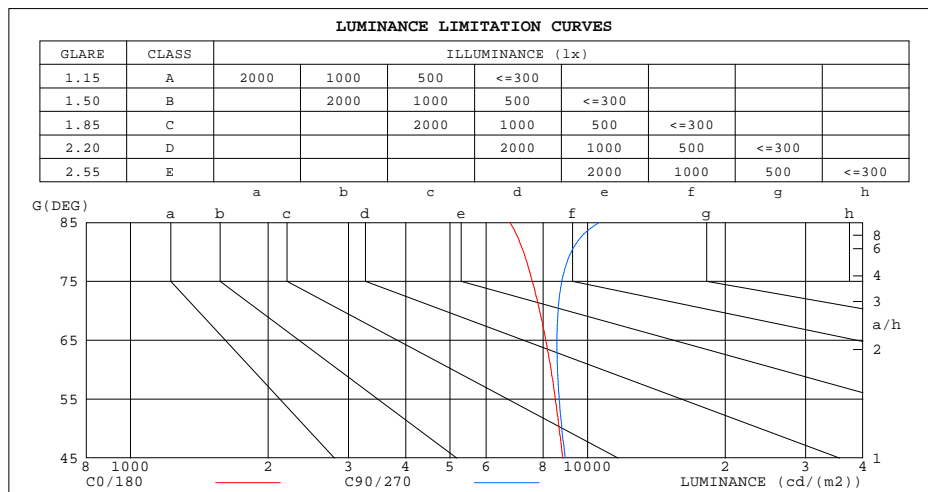
C Range: 0 - 360DEG
C Interval: 5.0DEG
Test Speed: HIGH
Temperature:26.3DEG
Operators:Ethan
Test Date:2021-10-07

γ Range: 0 - 180DEG
γ Interval: 0.5DEG
Test System:EVERFINE GO-2000B_V1 SYSTEM V2.0.268
Humidity:36%
Test Distance:6.770m [K=1.0000]
Remarks: E款 5:5
0:10 源磊A+档

ZONAL FLUX DIAGRAM
AND LUMINANCE LIMITATION CURVES

ZONAL FLUX DIAGRAM:

γ	C0	C45	C90	C135	C180	C225	C270	C315	γ	ϕ zone	ϕ total	ϕ lum,lamp
5	724.3	706.3	696.9	698.5	712.7	695.1	692.1	703.0	0- 5	16.97	16.97	0.47,0.47
10	718.8	687.5	672.4	672.0	695.4	665.0	662.8	681.1	5- 10	49.41	66.37	1.83,1.83
15	704.5	665.3	647.9	642.1	671.1	631.5	633.4	655.8	10- 15	79.07	145.4	4.4
20	684.8	638.8	623.3	609.2	636.3	595.5	604.1	626.7	15- 20	105.2	250.7	6.9,6.9
25	657.7	610.5	598.8	567.4	584.9	548.3	574.7	596.0	20- 25	127.0	377.7	10.4,10.4
30	624.3	580.0	574.3	520.9	543.6	494.6	545.4	563.3	25- 30	144.2	521.9	14.4,14.4
35	584.8	547.6	549.7	478.4	500.7	449.2	516.0	529.0	30- 35	157.1	679.1	18.7,18.7
40	541.3	513.5	525.2	440.8	452.9	408.6	486.7	493.5	35- 40	165.7	844.7	23.2,23.2
45	494.4	479.4	500.6	405.0	401.4	369.6	457.3	458.1	40- 45	169.7	1014	27.9,27.9
50	441.0	444.4	447.2	368.6	347.9	330.4	406.6	422.5	45- 50	168.4	1183	32.6,32.6
55	385.8	408.8	393.8	330.9	293.2	291.5	355.8	385.9	50- 55	160.4	1343	37.37
60	329.4	348.9	340.4	274.9	237.4	244.8	305.1	328.4	55- 60	147.1	1490	41.41
65	271.0	290.2	286.9	223.1	181.8	200.4	254.3	272.1	60- 65	129.6	1620	44.6,44.6
70	212.9	233.0	233.5	173.4	127.6	158.3	203.6	217.1	65- 70	108.9	1729	47.6,47.6
75	155.2	177.6	180.1	126.3	74.24	118.7	152.8	163.6	70- 75	86.09	1815	50.50
80	99.62	124.1	126.6	82.36	25.62	81.24	102.1	111.2	75- 80	62.33	1877	51.7,51.7
85	46.65	71.53	73.20	40.78	2.227	45.13	51.30	59.76	80- 85	38.72	1916	52.7,52.7
90	5.134	19.74	19.77	0.5390	9.947	9.854	0.5446	8.759	85- 90	16.32	1932	53.2,53.2
95	0.7539	51.01	61.80	43.37	73.41	52.36	47.65	42.75	90- 95	15.00	1947	53.6,53.6
100	22.64	83.13	103.8	86.57	116.7	94.18	94.75	77.52	95-100	34.02	1981	54.5,54.5
105	67.46	116.6	145.9	130.0	150.1	134.7	141.9	114.0	100-105	54.05	2035	56.56
110	114.4	151.9	187.9	174.0	216.9	176.8	189.0	152.5	105-110	74.44	2110	58.1,58.1
115	163.7	189.7	229.9	219.5	265.0	223.8	236.1	193.5	110-115	94.04	2204	60.7,60.7
120	214.9	229.6	272.0	265.3	312.0	269.5	283.2	237.7	115-120	111.9	2316	63.7,63.7
125	266.2	272.1	314.0	309.3	360.8	321.8	330.3	284.3	120-125	127.1	2443	67.2,67.2
130	317.5	308.5	356.0	343.2	405.4	358.6	377.4	320.5	125-130	138.8	2582	71.1,71.1
135	367.5	345.8	398.1	379.4	444.6	392.1	424.5	357.1	130-135	146.2	2728	75.1,75.1
140	415.8	384.0	427.1	413.0	491.4	424.6	450.3	394.4	135-140	148.5	2876	79.2,79.2
145	461.8	422.5	456.2	452.7	528.0	462.8	476.2	431.5	140-145	146.2	3023	83.2,83.2
150	504.9	461.2	485.3	490.7	559.9	507.1	502.1	468.8	145-150	139.7	3162	87.87
155	544.5	498.5	514.4	532.7	600.7	551.1	528.0	505.0	150-155	129.2	3292	90.6,90.6
160	578.7	534.5	543.5	571.5	634.5	579.6	553.8	539.3	155-160	114.6	3406	93.8,93.8
165	607.3	569.3	572.6	598.7	650.6	604.1	579.7	572.6	160-165	95.08	3501	96.4,96.4
170	630.9	602.1	601.7	622.4	660.3	625.4	605.6	603.9	165-170	71.63	3573	98.3,98.3
175	648.6	632.6	630.7	643.3	662.4	643.4	631.4	632.2	170-175	44.89	3618	99.6,99.6
180	659.8	659.8	659.8	659.8	657.3	657.3	657.3	657.3	175-180	15.46	3633	100.100
DEG	LUMINOUS INTENSITY:cd									UNIT:lm		



LUMINANCE cd/(m2)		
G(°)	C0/180	C90/270
85	6759	10605
80	7243	9208
75	7572	8784
70	7860	8620
65	8097	8572
60	8317	8595
55	8494	8669
50	8663	8785
45	8829	8940

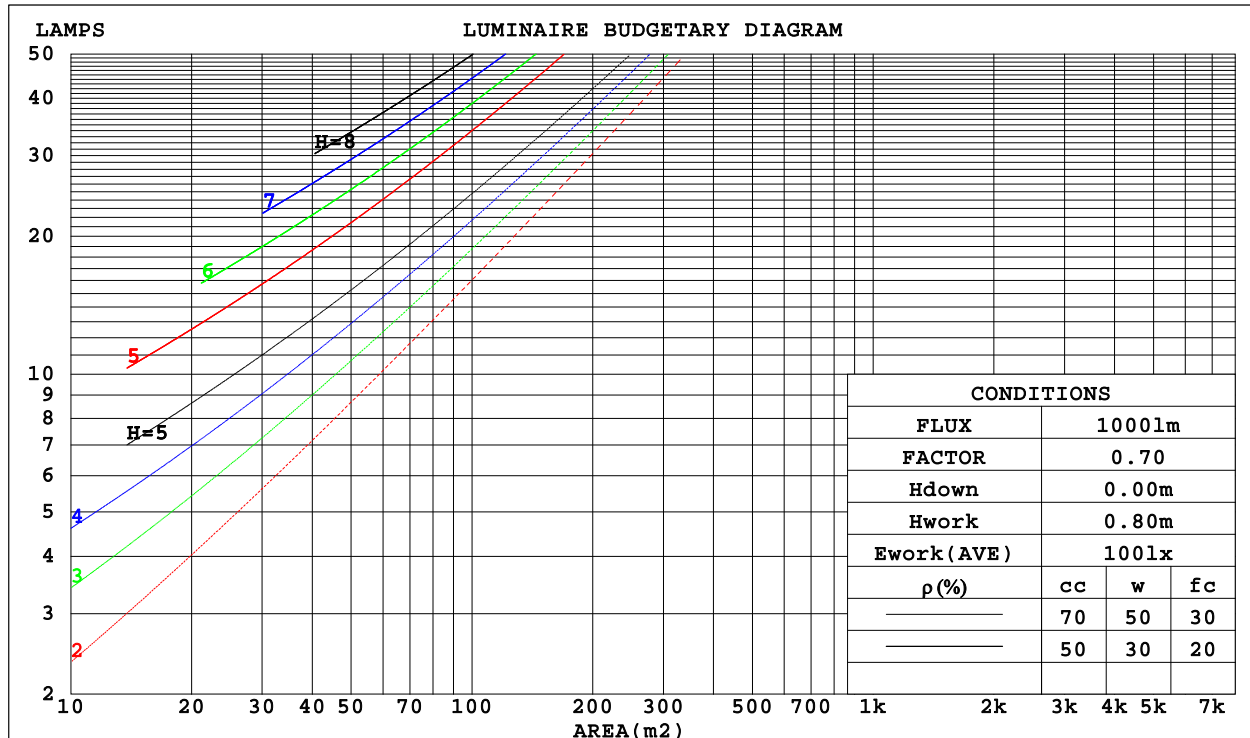
C Range: 0 - 360DEG
C Interval: 5.0DEG
Test Speed: HIGH
Temperature: 26.3DEG
Operators: Ethan
Test Date: 2021-10-07

γ Range: 0 - 180DEG
 γ Interval: 0.5DEG
Test System: EVERFINE GO-2000B_V1 SYSTEM V2.0.268
Humidity: 36%
Test Distance: 6.770m [K=1.0000]
Remarks: E款 5:5
0:10 源磊A+档

CU AND LUMINAIRE BUDGETARY ESTIMATE DIAGRAM

Test:U:121.4V I:0.2470A P:29.60W PF:0.9830 Lamp Flux:3633.21x1 lm		
NAME: 二代线条灯	TYPE:	WEIGHT:
DIM.: 4FT	SPEC.:3000K	SERIAL No.:认证样品
MFR.: YQ	SUR.:1.2*0.066m	PROTECTION ANGLE:

ρ_{cc}	80%			70%			50%			30%			10%			0
ρ_w	50%	30%	10%	50%	30%	10%	50%	30%	10%	50%	30%	10%	50%	30%	10%	0
ρ_{fc}	20%			20%			20%			20%			20%			0
RCR	RCR:Room Cavity Ratio						Coefficients of Utilization(CU)									
0.0	1.08	1.08	1.08	.00	.00	.00	.85	.85	.85	.72	.72	.72	.59	.59	.59	.53
1.0	.94	.89	.86	.87	.83	.80	.74	.71	.69	.62	.60	.59	.52	.50	.49	.44
2.0	.81	.75	.70	.76	.70	.65	.65	.60	.57	.54	.51	.49	.45	.43	.41	.36
3.0	.71	.64	.58	.66	.60	.54	.57	.52	.47	.48	.44	.41	.40	.37	.35	.31
4.0	.63	.55	.49	.59	.51	.46	.50	.45	.40	.43	.38	.35	.35	.32	.30	.26
5.0	.56	.48	.42	.52	.45	.39	.45	.39	.35	.38	.34	.30	.32	.28	.26	.23
6.0	.50	.42	.36	.47	.39	.34	.40	.35	.30	.34	.30	.26	.29	.25	.23	.20
7.0	.45	.37	.32	.42	.35	.30	.37	.31	.27	.31	.27	.23	.26	.23	.20	.17
8.0	.41	.33	.28	.38	.31	.26	.33	.28	.24	.29	.24	.21	.24	.21	.18	.16
9.0	.38	.30	.25	.35	.28	.24	.31	.25	.21	.26	.22	.19	.22	.19	.16	.14
10.0	.34	.27	.22	.32	.26	.21	.28	.23	.19	.24	.20	.17	.21	.17	.15	.13



C Range: 0 - 360DEG
 C Interval: 5.0DEG
 Test Speed: HIGH
 Temperature:26.3DEG
 Operators:Ethan
 Test Date:2021-10-07

γ Range: 0 - 180DEG
 γ Interval: 0.5DEG
 Test System:EVERFINE GO-2000B_V1 SYSTEM V2.0.268
 Humidity:36%
 Test Distance:6.770m [K=1.0000]
 Remarks: E款 5:5
 0:10 源磊A+档

WEC AND CCEC

Test:U:121.4V I:0.2470A P:29.60W PF:0.9830 Lamp Flux:3633.21x1 lm		
NAME: 二代线条灯	TYPE:	WEIGHT:
DIM.: 4FT	SPEC.:3000K	SERIAL No.:认证样品
MFR.: YQ	SUR.:1.2*0.066m	PROTECTION ANGLE:

pcc	80%			70%			50%			30%			10%			0
pw	50%	30%	10%	50%	30%	10%	50%	30%	10%	50%	30%	10%	50%	30%	10%	0
pfc	20%			20%			20%			20%			20%			0
RCR	RCR:Room Cavity Ratio						Wall Exitance Coefficients(WEC)									
0.0																
1.0	.292	.166	.053	.271	.155	.049	.231	.133	.042	.195	.112	.036	.161	.093	.030	
2.0	.270	.148	.045	.251	.138	.043	.214	.119	.037	.181	.102	.032	.150	.085	.027	
3.0	.248	.132	.040	.231	.124	.037	.198	.107	.033	.167	.092	.028	.139	.077	.024	
4.0	.229	.119	.035	.213	.111	.033	.183	.097	.029	.155	.083	.025	.128	.070	.021	
5.0	.212	.108	.031	.197	.101	.029	.169	.088	.026	.143	.076	.022	.119	.064	.019	
6.0	.197	.099	.028	.183	.092	.027	.157	.081	.023	.133	.069	.020	.111	.058	.017	
7.0	.183	.091	.026	.171	.085	.024	.147	.074	.021	.124	.064	.019	.103	.054	.016	
8.0	.171	.084	.024	.159	.079	.022	.137	.069	.020	.117	.059	.017	.097	.050	.014	
9.0	.160	.078	.022	.150	.073	.020	.129	.064	.018	.110	.055	.016	.091	.046	.013	
10.0	.151	.072	.020	.141	.068	.019	.122	.060	.017	.103	.051	.015	.086	.043	.012	

pcc	80%			70%			50%			30%			10%			0
pw	50%	30%	10%	50%	30%	10%	50%	30%	10%	50%	30%	10%	50%	30%	10%	0
pfc	20%			20%			20%			20%			20%			0
RCR	RCR:Room Cavity Ratio			Ceiling Cavity Exitance Coefficients(CCEC)												
0.0	.547	.547	.547	.468	.468	.468	.319	.319	.319	.183	.183	.183	.059	.059	.059	
1.0	.539	.516	.495	.461	.443	.426	.315	.305	.295	.181	.176	.171	.058	.057	.055	
2.0	.531	.494	.463	.455	.425	.400	.312	.294	.279	.180	.171	.164	.058	.055	.053	
3.0	.524	.478	.441	.449	.412	.383	.309	.287	.268	.178	.167	.158	.057	.054	.052	
4.0	.517	.466	.427	.444	.403	.371	.305	.281	.261	.177	.164	.155	.057	.054	.051	
5.0	.511	.457	.417	.439	.395	.363	.302	.276	.256	.175	.162	.152	.056	.053	.050	
6.0	.504	.449	.410	.434	.389	.357	.299	.272	.252	.174	.160	.150	.056	.052	.050	
7.0	.498	.443	.404	.429	.384	.352	.296	.269	.250	.172	.159	.149	.056	.052	.049	
8.0	.493	.438	.400	.424	.380	.349	.293	.267	.248	.171	.157	.147	.055	.052	.049	
9.0	.487	.433	.397	.420	.376	.346	.291	.264	.246	.169	.156	.147	.055	.051	.049	
10.0	.482	.429	.395	.415	.373	.344	.288	.262	.245	.168	.155	.146	.055	.051	.048	

C Range: 0 - 360DEG
 C Interval: 5.0DEG
 Test Speed: HIGH
 Temperature:26.3DEG
 Operators:Ethan
 Test Date:2021-10-07

γ Range: 0 - 180DEG
 γ Interval: 0.5DEG
 Test System:EVERFINE GO-2000B_V1 SYSTEM V2.0.268
 Humidity:36%
 Test Distance:6.770m [K=1.0000]
 Remarks: E款 5:5
 0:10 源磊A+档

Uncorrected UGR Table

Test:U:121.4V I:0.2470A P:29.60W PF:0.9830 Lamp Flux:3633.21x1 lm											
NAME: 二代线条灯					TYPE:			WEIGHT:			
DIM.: 4FT					SPEC.:3000K			SERIAL No.:认证样品			
MFR.: YQ					SUR.:1.2*0.066m			PROTECTION ANGLE:			
ceiling/cavity	0.7	0.7	0.5	0.5	0.3	0.7	0.7	0.5	0.5	0.3	
walls	0.5	0.3	0.5	0.3	0.3	0.5	0.3	0.5	0.3	0.3	
working plane	0.2	0.2	0.2	0.2	0.2	0.2	0.2	0.2	0.2	0.2	
Room dimensions		Viewed crosswise				Viewed endwise					
x = 2H y = 2H	17.4	18.4	18.2	19.2	20.3	17.9	18.9	18.8	19.7	20.8	
	3H	18.9	19.8	19.8	20.7	21.7	19.6	20.5	20.5	21.3	22.4
	4H	19.5	20.4	20.4	21.2	22.3	20.4	21.2	21.2	22.1	23.2
	6H	20.0	20.8	20.9	21.7	22.8	21.0	21.8	21.9	22.7	23.8
	8H	20.2	20.9	21.1	21.8	22.9	21.3	22.0	22.2	22.9	24.1
	12H	20.3	21.0	21.2	21.9	23.0	21.5	22.2	22.4	23.1	24.3
4H	2H	18.1	18.9	18.9	19.8	20.9	18.4	19.3	19.3	20.1	21.2
	3H	19.8	20.5	20.7	21.4	22.5	20.3	21.0	21.2	21.9	23.1
	4H	20.5	21.1	21.4	22.1	23.2	21.2	21.8	22.1	22.8	23.9
	6H	21.1	21.7	22.0	22.6	23.8	22.0	22.6	23.0	23.5	24.7
	8H	21.3	21.8	22.3	22.8	24.0	22.4	22.9	23.3	23.8	25.0
	12H	21.4	21.9	22.4	22.9	24.1	22.7	23.1	23.6	24.1	25.3
8H	4H	20.8	21.3	21.8	22.3	23.5	21.4	21.9	22.4	22.9	24.1
	6H	21.6	22.0	22.6	23.0	24.3	22.5	22.9	23.4	23.8	25.1
	8H	21.9	22.3	22.9	23.3	24.6	22.9	23.3	23.9	24.3	25.6
	12H	22.2	22.5	23.2	23.5	24.8	23.4	23.7	24.4	24.7	26.0
12H	4H	20.9	21.3	21.8	22.3	23.5	21.4	21.9	22.4	22.8	24.1
	6H	21.7	22.1	22.7	23.1	24.3	22.5	22.9	23.5	23.9	25.1
	8H	22.1	22.4	23.1	23.4	24.7	23.0	23.4	24.0	24.4	25.7
Variations with the observer position at spacings:											
S = 1.0H	+ 0.1 / - 0.1					+ 0.1 / - 0.2					
1.5H	+ 0.1 / - 0.1					+ 0.2 / - 0.3					
2.0H	+ 0.2 / - 0.2					+ 0.1 / - 0.4					

CIE Pub.117 Corrected 3633 lm Total Lamp Luminous Flux.(8log(F/F0) = 4.5)

C Range: 0 - 360DEG
 C Interval: 5.0DEG
 Test Speed: HIGH
 Temperature:26.3DEG
 Operators:Ethan
 Test Date:2021-10-07

γ Range: 0 - 180DEG
 γ Interval: 0.5DEG
 Test System:EVERFINE GO-2000B_V1 SYSTEM V2.0.268
 Humidity:36%
 Test Distance:6.770m [K=1.0000]
 Remarks: E款 5:5
 0:10 源磊A+档

UTILIZATION FACTORS TABLE

Test:U:121.4V I:0.2470A P:29.60W PF:0.9830 Lamp Flux:3633.21x1 lm		
NAME: 二代线条灯	TYPE:	WEIGHT:
DIM.: 4FT	SPEC.:3000K	SERIAL No.:认证样品
MFR.: YQ	SUR.:1.2*0.066m	PROTECTION ANGLE:

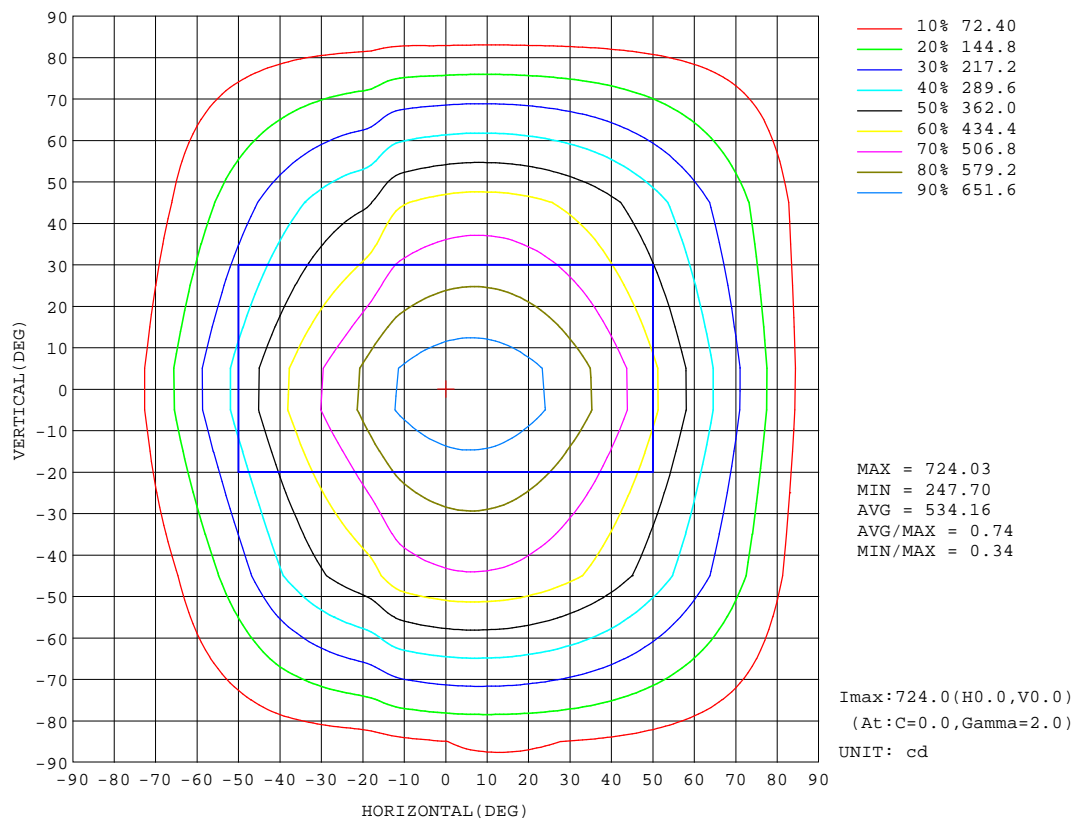
REFLECTANCE										
Ceiling	0.8	0.8	0.8	0.7	0.7	0.7	0.5	0.5	0.5	0
Walls	0.7	0.5	0.3	0.7	0.5	0.3	0.7	0.5	0.3	0
Working plane	0.2	0.2	0.2	0.2	0.2	0.2	0.2	0.2	0.2	0
ROOM INDEX	UTILIZATION FACTORS(PERCENT) $k(RI) \times RCR = 5$									
k = 0.60	44	33	27	42	32	26	38	29	24	17
0.80	54	42	35	51	40	34	45	37	31	21
1.00	62	50	43	58	48	41	51	44	37	26
1.25	69	57	50	64	54	48	56	49	43	30
1.50	74	63	56	69	60	53	60	53	48	32
2.00	81	71	64	75	67	61	65	59	54	36
2.50	85	77	70	79	72	66	68	63	58	39
3.00	89	81	75	83	76	70	71	66	62	41
4.00	93	87	81	86	81	76	74	70	67	44
5.00	96	90	86	89	84	80	76	73	70	45
ROOM INDEX	UF(total)									Direct
According to DIN EN 13032-2 2004			Suspended					SHRNOM = 1.25		

C Range: 0 - 360DEG
 C Interval: 5.0DEG
 Test Speed: HIGH
 Temperature:26.3DEG
 Operators:Ethan
 Test Date:2021-10-07

γ Range: 0 - 180DEG
 γ Interval: 0.5DEG
 Test System:EVERFINE GO-2000B_V1 SYSTEM V2.0.268
 Humidity:36%
 Test Distance:6.770m [K=1.0000]
 Remarks: E款 5:5
 0:10 源磊A+档

ISOCANDELA DIAGRAM

Test:U:121.4V I:0.2470A P:29.60W PF:0.9830 Lamp Flux:3633.21x1 lm		
NAME: 二代线条灯	TYPE:	WEIGHT:
DIM.: 4FT	SPEC.:3000K	SERIAL No.:认证样品
MFR.: YQ	SUR.:1.2*0.066m	PROTECTION ANGLE:

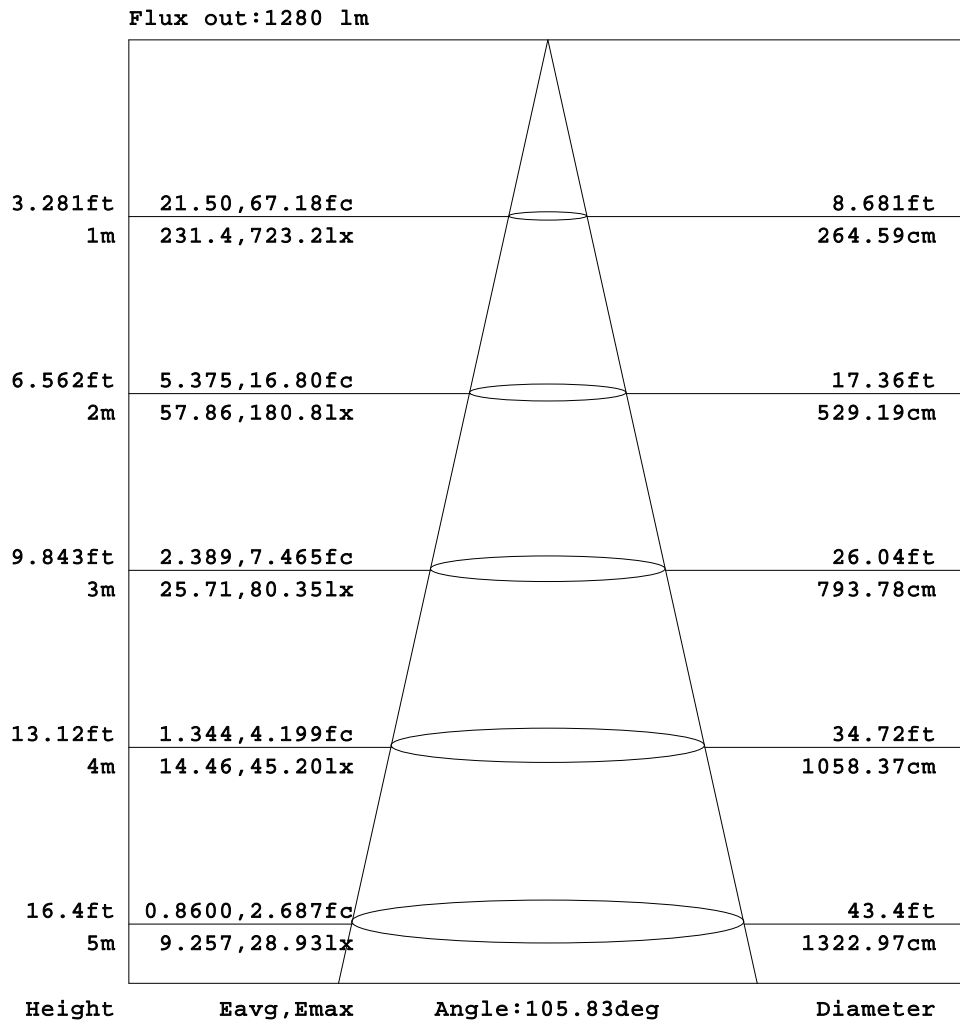


C Range: 0 - 360DEG
C Interval: 5.0DEG
Test Speed: HIGH
Temperature:26.3DEG
Operators:Ethan
Test Date:2021-10-07

γ Range: 0 - 180DEG
 γ Interval: 0.5DEG
Test System:EVERFINE GO-2000B_V1 SYSTEM V2.0.268
Humidity:36%
Test Distance:6.770m [K=1.0000]
Remarks: E款 5:5
0:10 源磊A+档

AAI Figure

Test:U:121.4V I:0.2470A P:29.60W PF:0.9830 Lamp Flux:3633.21x1 lm		
NAME: 二代线条灯	TYPE:	WEIGHT:
DIM.: 4FT	SPEC.:3000K	SERIAL No.:认证样品
MFR.: YQ	SUR.:1.2*0.066m	PROTECTION ANGLE:



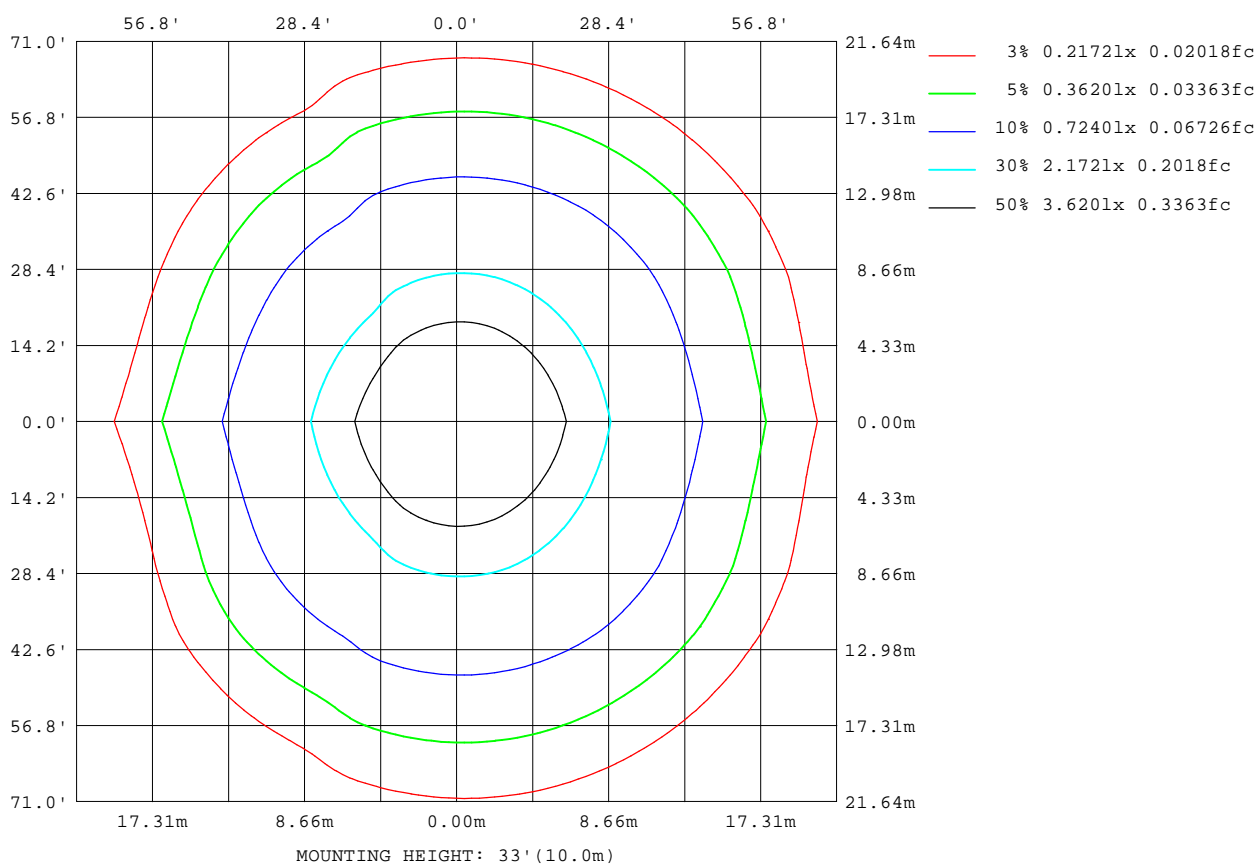
Note:The Curves indicate the illuminated area and the average illumination when the luminaire is at different distance.

C Range: 0 - 360DEG
C Interval: 5.0DEG
Test Speed: HIGH
Temperature:26.3DEG
Operators:Ethan
Test Date:2021-10-07

γ Range: 0 - 180DEG
γ Interval: 0.5DEG
Test System:EVERFINE GO-2000B_V1 SYSTEM V2.0.268
Humidity:36%
Test Distance:6.770m [K=1.0000]
Remarks: E款 5:5
0:10 源磊A+档

ISOLUX DIAGRAM

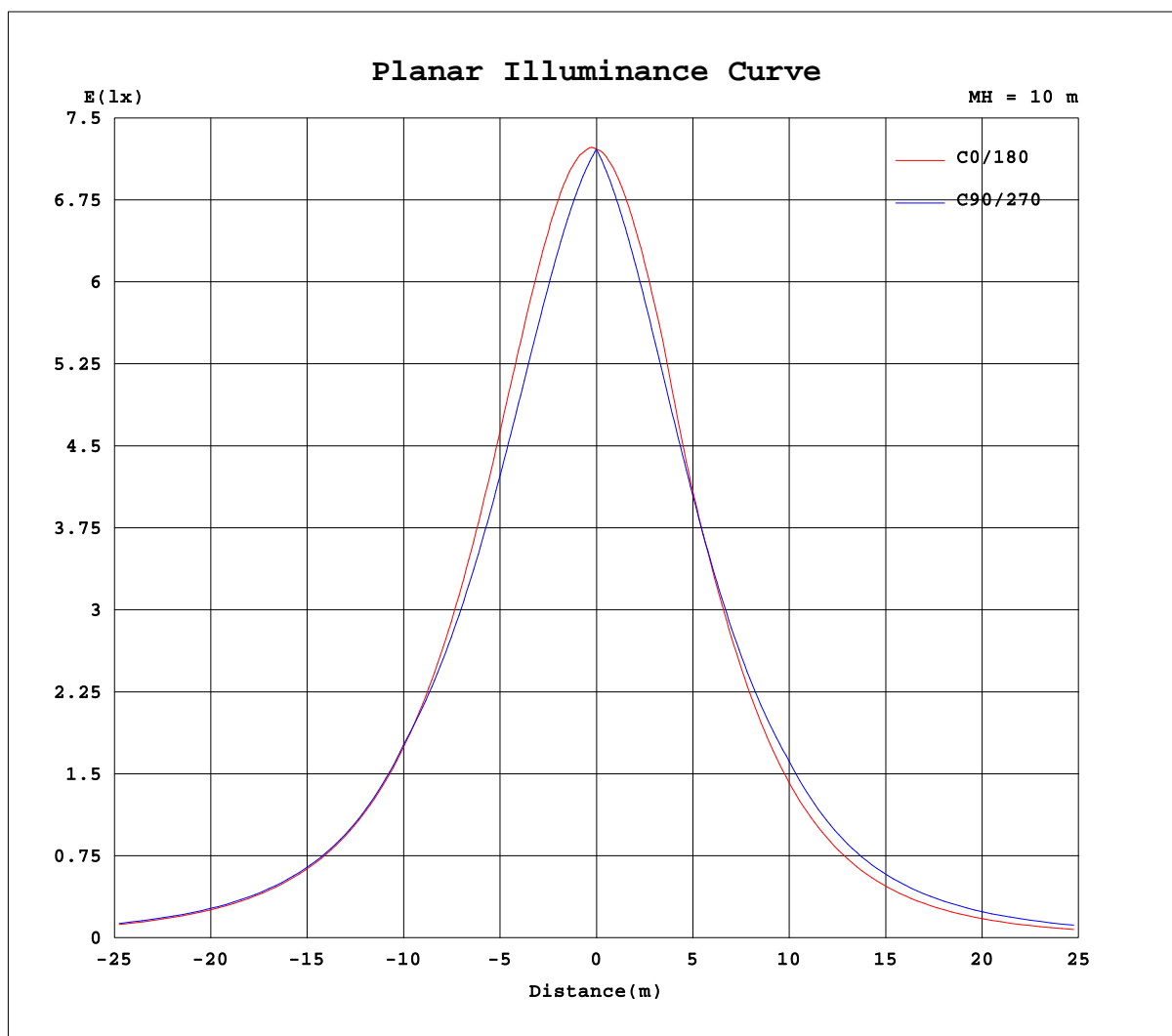
Test:U:121.4V I:0.2470A P:29.60W PF:0.9830 Lamp Flux:3633.21x1 lm		
NAME: 二代线条灯	TYPE:	WEIGHT:
DIM.: 4FT	SPEC.:3000K	SERIAL No.:认证样品
MFR.: YQ	SUR.:1.2*0.066m	PROTECTION ANGLE:



C Range: 0 - 360DEG
 C Interval: 5.0DEG
 Test Speed: HIGH
 Temperature: 26.3DEG
 Operators: Ethan
 Test Date: 2021-10-07

γ Range: 0 - 180DEG
 γ Interval: 0.5DEG
 Test System: EVERFINE GO-2000B_V1 SYSTEM V2.0.268
 Humidity: 36%
 Test Distance: 6.770m [K=1.0000]
 Remarks: E款 5:5
 0:10 源磊A+档

Planar Illuminance Curve



C Range: 0 - 360DEG
C Interval: 5.0DEG
Test Speed: HIGH
Temperature: 26.3DEG
Operators: Ethan
Test Date: 2021-10-07

γ Range: 0 - 180DEG
 γ Interval: 0.5DEG
Test System: EVERFINE GO-2000B_V1 SYSTEM V2.0.268
Humidity: 36%
Test Distance: 6.770m [K=1.0000]
Remarks: E款 5:5
0:10 源磊A+档

LUMINOUS DISTRIBUTION INTENSITY DATA

Test:U:121.4V I:0.2470A P:29.60W PF:0.9830 Lamp Flux:3633.21x1 lm		
NAME: 二代线条灯	TYPE:	WEIGHT:
DIM.: 4FT	SPEC.:3000K	SERIAL No.:认证样品
MFR.: YQ	SUR.:1.2*0.066m	PROTECTION ANGLE:

Table--1

UNIT: cd

C(DEG) γ (DEG)	0	5	10	15	20	25	30	35	40	45	50	55	60	65	70	75	80	85	90
0	721	721	721	721	721	721	721	721	721	721	721	721	721	721	721	721	721	721	721
5	724	722	720	718	716	714	711	710	708	706	705	704	703	702	701	700	699	698	697
10	719	715	710	706	703	699	696	693	690	688	685	683	681	679	678	676	675	674	672
15	704	698	693	687	682	678	675	671	668	665	663	660	658	656	655	652	651	650	648
20	685	677	670	663	657	652	648	645	642	639	637	635	634	632	630	629	627	625	623
25	658	648	640	633	626	622	618	615	612	610	609	608	607	607	605	604	602	601	599
30	624	613	604	596	590	586	584	582	581	580	580	580	580	580	580	579	578	576	574
35	585	573	563	556	551	547	546	545	546	548	549	551	552	553	554	554	553	552	550
40	541	528	518	512	507	506	506	508	511	513	517	521	524	527	528	529	529	528	525
45	494	480	470	464	461	462	464	469	474	479	485	490	495	499	502	504	504	503	501
50	441	427	418	413	413	416	421	428	436	444	452	460	461	459	458	455	453	450	447
55	386	371	363	361	363	368	377	387	399	409	407	406	405	404	403	402	399	397	394
60	329	315	308	308	313	322	334	347	348	349	349	349	349	349	348	347	345	343	340
65	271	257	253	256	265	277	285	286	288	290	292	293	294	294	294	293	291	290	287
70	213	200	199	206	219	223	224	227	230	233	236	238	239	240	240	239	238	236	233
75	155	144	147	159	161	164	167	171	174	178	181	183	185	185	186	185	184	183	180
80	99.6	91.2	99.9	103	106	109	113	117	121	124	127	129	131	132	132	132	131	129	127
85	46.7	44.6	48.0	52.0	55.8	59.3	62.7	65.8	68.8	71.5	73.9	75.8	77.1	77.8	77.9	77.7	76.8	75.4	73.2
90	5.13	4.89	6.43	8.08	9.94	11.9	14.0	16.0	17.9	19.7	21.4	22.7	23.7	24.2	24.3	23.8	23.0	21.7	19.8
95	0.75	1.08	8.03	20.1	27.6	33.5	38.8	43.3	47.3	51.0	54.3	57.2	59.4	61.3	62.5	63.1	63.3	62.9	61.8
100	22.6	19.0	26.8	39.8	49.7	57.9	65.6	72.0	77.9	83.1	87.9	92.0	95.5	98.6	101	103	104	104	104
105	67.5	59.5	61.6	69.1	78.5	87.6	96.0	103	110	117	122	128	132	136	140	142	144	145	146
110	114	104	102	106	114	122	130	138	145	152	159	164	170	175	179	182	185	187	188
115	164	151	146	147	153	161	169	176	183	190	196	203	208	214	218	222	225	228	230
120	215	201	194	192	195	200	208	217	223	230	236	242	248	254	258	263	266	269	272
125	266	252	243	239	239	242	248	255	263	272	278	283	289	294	299	304	307	311	314
130	317	303	293	287	285	286	289	295	301	309	316	324	331	336	340	345	349	352	356
135	367	353	342	336	332	331	332	336	340	346	352	359	366	372	379	384	389	394	398
140	416	402	391	384	379	376	376	377	380	384	389	394	399	404	410	415	419	423	427
145	462	449	438	430	424	421	419	419	421	423	426	429	433	437	441	445	449	452	456
150	505	493	483	475	469	465	462	460	460	461	463	464	467	470	473	476	479	482	485
155	544	534	525	517	511	506	503	500	499	498	498	499	501	502	505	507	509	512	514
160	579	570	562	556	550	545	541	538	536	535	534	534	534	535	536	537	539	541	543
165	607	600	594	589	584	580	577	573	571	569	568	568	567	567	567	569	569	571	573
170	631	626	622	618	614	611	608	606	604	602	601	600	599	599	599	599	600	601	602
175	649	646	644	642	640	638	637	635	634	633	631	631	630	630	630	630	630	630	631
180	660	660	660	660	660	660	660	660	660	660	660	660	660	660	660	660	660	660	660

C Range: 0 - 360DEG
C Interval: 5.0DEG
Test Speed: HIGH
Temperature:26.3DEG
Operators:Ethan
Test Date:2021-10-07

γ Range: 0 - 180DEG
γ Interval: 0.5DEG
Test System:EVERFINE GO-2000B_V1 SYSTEM V2.0.268
Humidity:36%
Test Distance:6.770m [K=1.0000]
Remarks: E款 5:5
0:10 源磊A+档

LUMINOUS DISTRIBUTION INTENSITY DATA

Test:U:121.4V I:0.2470A P:29.60W PF:0.9830 Lamp Flux:3633.21x1 lm		
NAME: 二代线条灯	TYPE:	WEIGHT:
DIM.: 4FT	SPEC.:3000K	SERIAL No.:认证样品
MFR.: YQ	SUR.:1.2*0.066m	PROTECTION ANGLE:

Table--2

UNIT: cd

C(°) \ γ (°)	95	100	105	110	115	120	125	130	135	140	145	150	155	160	165	170	175	180	185
0	721	721	721	721	721	721	721	721	721	721	721	721	721	721	721	721	721	721	721
5	697	697	697	697	697	697	698	698	699	699	700	702	703	705	707	709	711	713	710
10	672	671	671	670	670	670	670	671	672	673	675	676	678	681	684	688	691	695	690
15	647	646	644	643	643	642	642	642	642	643	644	647	649	652	655	660	665	671	664
20	622	620	618	616	614	613	611	611	609	608	607	608	609	612	616	621	628	636	626
25	597	594	591	588	585	583	579	573	567	563	560	559	559	560	564	569	576	585	573
30	572	568	565	561	556	549	539	528	521	516	512	511	511	514	518	525	533	544	530
35	546	542	538	532	525	510	495	485	478	474	471	469	469	471	474	480	489	501	486
40	521	517	511	505	489	467	455	447	441	435	430	426	424	423	426	431	440	453	437
45	496	491	484	475	450	429	421	413	405	397	388	381	376	373	373	378	387	401	385
50	443	440	436	425	401	393	389	380	369	356	345	334	325	319	317	322	332	348	331
55	390	386	382	366	346	342	340	336	331	317	301	284	270	262	260	265	275	293	276
60	336	332	327	309	294	291	288	282	275	267	254	233	217	208	204	208	219	237	221
65	283	279	273	254	244	241	237	231	223	212	196	181	166	156	151	153	163	182	166
70	230	225	219	201	194	192	187	181	173	161	146	132	119	108	102	103	110	128	113
75	176	172	165	151	145	143	139	134	126	115	103	91.3	80.2	69.5	60.0	58.8	61.8	74.2	61.8
80	123	119	113	101	97.3	95.5	92.3	88.3	82.4	74.0	65.5	57.3	49.2	41.0	33.1	22.9	20.6	25.6	19.4
85	70.0	65.9	60.4	52.4	49.3	48.3	46.3	44.0	40.8	36.4	32.3	28.3	24.5	20.4	16.1	8.50	2.15	2.23	2.47
90	16.9	13.0	8.48	3.89	1.54	1.36	0.76	0.54	0.54	0.63	1.13	1.97	3.03	4.27	5.55	7.81	10.5	9.95	19.7
95	59.8	56.7	52.9	44.6	43.1	43.6	43.1	43.3	43.4	43.5	44.3	45.5	46.9	49.0	51.9	55.9	65.6	73.4	51.6
100	103	100	97.5	85.7	84.7	85.8	85.4	86.3	86.6	86.6	88.0	89.6	91.7	95.2	100	108	106	117	89.6
105	146	144	142	127	126	128	128	130	130	131	132	135	138	143	150	147	151	150	129
110	188	188	187	170	168	170	171	173	174	176	178	182	187	190	188	190	197	217	186
115	231	232	232	215	209	213	215	216	220	222	224	229	231	229	229	233	244	265	237
120	274	275	277	263	250	255	259	260	265	268	272	269	269	270	272	278	290	312	286
125	317	319	321	314	291	296	302	305	309	311	308	307	307	311	317	326	338	361	339
130	359	362	365	365	337	337	343	345	343	345	347	347	349	351	358	369	384	405	386
135	401	404	406	407	387	372	376	377	379	379	382	387	391	396	403	412	425	445	428
140	430	433	435	437	433	412	411	413	413	416	419	423	430	437	447	458	471	491	475
145	459	462	465	467	469	460	448	450	453	452	455	461	467	475	484	496	509	528	513
150	488	491	494	496	499	501	496	489	491	496	498	500	503	511	520	531	543	560	547
155	517	520	522	525	528	531	534	535	533	533	538	546	553	559	566	574	584	601	589
160	546	548	551	554	557	560	564	567	571	575	578	582	587	594	603	613	623	634	625
165	575	577	579	581	584	587	591	594	599	603	607	613	618	624	630	637	644	651	644
170	603	605	607	609	611	613	616	619	622	626	629	633	638	642	646	651	656	660	656
175	632	632	634	635	636	638	640	641	643	645	647	649	652	654	656	659	661	662	660
180	660	660	660	660	660	660	660	660	660	660	660	660	660	660	660	660	660	657	657

C Range: 0 - 360DEG
C Interval: 5.0DEG
Test Speed: HIGH
Temperature:26.3DEG
Operators:Ethan
Test Date:2021-10-07

γ Range: 0 - 180DEG
γ Interval: 0.5DEG
Test System:EVERFINE GO-2000B_V1 SYSTEM V2.0.268
Humidity:36%
Test Distance:6.770m [K=1.0000]
Remarks: E款 5:5
0:10 源磊A+档

LUMINOUS DISTRIBUTION INTENSITY DATA

Test:U:121.4V I:0.2470A P:29.60W PF:0.9830 Lamp Flux:3633.21x1 lm		
NAME: 二代线条灯	TYPE:	WEIGHT:
DIM.: 4FT	SPEC.:3000K	SERIAL No.:认证样品
MFR.: YQ	SUR.:1.2*0.066m	PROTECTION ANGLE:

Table--3

UNIT: cd

C(DEC) γ (DEC)	190	195	200	205	210	215	220	225	230	235	240	245	250	255	260	265	270	275	280
0	721	721	721	721	721	721	721	721	721	721	721	721	721	721	721	721	721	721	721
5	708	705	703	701	699	697	696	695	694	694	693	692	692	692	692	692	692	693	694
10	686	682	678	674	671	669	667	665	663	662	662	661	661	661	662	662	663	664	666
15	657	652	647	643	639	636	633	631	630	629	629	629	630	630	631	632	633	636	637
20	617	610	604	600	597	595	595	596	595	595	595	596	597	599	600	602	604	606	608
25	564	556	550	546	543	542	544	548	554	559	561	563	565	567	570	572	575	577	579
30	519	510	502	497	493	492	492	495	501	513	524	529	532	536	539	542	545	548	551
35	474	465	458	453	450	448	448	449	452	460	479	494	499	504	508	512	516	519	521
40	425	416	410	407	405	405	407	409	411	414	427	453	467	472	477	482	487	490	492
45	373	365	360	359	359	362	365	370	374	377	381	406	434	441	447	452	457	461	463
50	319	312	310	310	313	318	324	330	337	342	342	352	384	394	398	402	407	410	414
55	265	260	259	261	267	275	283	291	295	298	299	301	329	344	348	352	356	359	362
60	211	208	210	215	223	233	239	245	250	254	256	256	276	295	298	301	305	308	311
65	158	158	162	171	179	187	194	200	206	210	213	214	225	245	249	251	254	257	259
70	108	111	119	128	137	144	152	158	164	168	171	172	178	196	199	201	204	206	208
75	61.2	68.4	80.2	90.3	99.1	107	113	119	124	127	129	130	133	147	150	151	153	154	156
80	21.3	38.1	50.6	59.3	66.5	72.4	77.1	81.2	84.6	87.0	88.2	89.0	90.2	99.2	101	101	102	103	104
85	11.6	22.3	29.7	34.1	37.8	40.9	43.3	45.1	46.7	47.7	47.6	47.8	47.8	51.6	52.2	50.7	51.3	51.9	52.7
90	18.2	16.3	14.3	12.1	11.3	11.0	10.6	9.85	9.47	8.76	7.30	6.73	5.91	4.26	3.30	0.74	0.54	0.61	0.95
95	44.8	41.6	41.5	42.9	44.8	48.0	51.2	52.4	51.3	51.9	50.7	49.5	51.2	52.3	51.1	48.4	47.6	47.0	46.5
100	73.4	69.2	71.9	76.2	80.2	87.2	93.4	94.2	93.3	95.4	94.1	92.2	97.1	100	98.9	96.0	94.8	93.4	92.1
105	115	106	109	113	119	130	138	135	136	139	137	135	144	148	147	144	142	140	138
110	166	155	153	157	166	177	186	177	180	183	181	178	193	196	195	191	189	186	184
115	218	206	202	208	219	230	227	224	227	228	224	222	244	244	242	239	236	233	230
120	268	258	257	261	272	281	268	270	275	272	267	270	294	292	290	286	283	280	276
125	323	314	309	312	315	307	313	322	321	316	310	323	343	340	337	334	330	326	322
130	371	362	358	352	347	349	354	359	359	358	356	383	392	388	385	381	377	373	369
135	416	405	397	394	390	392	392	392	390	389	402	430	432	432	431	428	424	420	414
140	461	449	441	436	433	430	427	425	425	430	451	460	459	459	457	454	450	446	441
145	501	490	482	475	469	464	463	463	466	479	488	488	486	485	482	479	476	472	468
150	535	525	516	511	508	507	505	507	515	518	517	515	513	511	508	505	502	499	495
155	579	571	565	558	553	551	551	551	549	546	544	541	539	536	534	531	528	525	522
160	616	609	602	597	592	587	583	580	576	573	570	567	564	561	559	557	554	552	549
165	638	632	626	621	616	612	608	604	601	597	594	591	589	586	584	582	580	578	577
170	651	647	643	639	635	632	629	625	622	620	617	615	613	611	609	607	606	605	604
175	658	656	653	651	649	647	645	643	642	640	639	638	636	635	634	632	631	631	631
180	657	657	657	657	657	657	657	657	657	657	657	657	657	657	657	657	657	657	657

C Range: 0 - 360DEG
C Interval: 5.0DEG
Test Speed: HIGH
Temperature:26.3DEG
Operators:Ethan
Test Date:2021-10-07

γ Range: 0 - 180DEG
γ Interval: 0.5DEG
Test System:EVERFINE GO-2000B_V1 SYSTEM V2.0.268
Humidity:36%
Test Distance:6.770m [K=1.0000]
Remarks: E款 5:5
0:10 源磊A+档

LUMINOUS DISTRIBUTION INTENSITY DATA

Test:U:121.4V I:0.2470A P:29.60W PF:0.9830 Lamp Flux:3633.21x1 lm		
NAME: 二代线条灯	TYPE:	WEIGHT:
DIM.: 4FT	SPEC.:3000K	SERIAL No.:认证样品
MFR.: YQ	SUR.:1.2*0.066m	PROTECTION ANGLE:

Table--4

UNIT: cd

C(DEC) γ (DEC)	285	290	295	300	305	310	315	320	325	330	335	340	345	350	355				
0	721	721	721	721	721	721	721	721	721	721	721	721	721	721	721				
5	695	696	698	699	700	701	703	705	707	709	712	714	717	719	722				
10	667	669	671	673	676	678	681	684	688	691	695	700	704	709	714				
15	639	641	644	646	649	652	656	659	663	668	673	678	684	690	697				
20	611	613	615	618	621	624	627	631	635	640	645	652	659	667	675				
25	582	584	586	588	591	593	596	600	604	608	614	620	628	637	647				
30	553	555	556	558	560	561	563	566	569	573	577	583	591	600	612				
35	523	525	526	527	528	528	529	530	532	534	538	543	550	559	571				
40	494	496	496	496	495	495	494	493	493	494	496	500	506	515	526				
45	465	466	465	464	463	460	458	456	453	452	452	454	459	467	479				
50	418	421	425	429	430	426	422	418	413	409	406	406	408	415	425				
55	366	369	372	375	379	382	386	380	372	366	360	357	357	361	370				
60	314	317	319	321	324	326	328	331	333	324	315	308	306	307	314				
65	262	264	266	268	270	271	272	273	274	276	272	262	255	253	257				
70	210	212	213	215	216	217	217	217	217	218	219	218	207	201	201				
75	158	159	160	162	163	163	164	163	163	163	163	163	164	152	147				
80	106	107	108	109	110	111	111	111	111	111	110	109	109	109	97.3				
85	53.5	54.5	55.6	56.8	58.1	59.0	59.8	60.4	60.8	61.0	60.9	60.6	59.8	58.1	56.6				
90	1.40	2.21	3.27	4.54	5.96	7.36	8.76	10.1	11.4	12.7	13.8	14.9	15.9	16.7	17.5				
95	45.9	45.5	45.1	44.8	44.3	43.7	42.7	41.5	39.7	37.4	33.8	28.9	21.1	8.33	1.86				
100	90.5	89.0	87.2	85.3	83.1	80.5	77.5	74.0	69.5	64.2	57.0	48.1	36.0	18.0	13.5				
105	135	133	130	126	123	119	114	108	102	95.0	86.2	75.6	63.6	55.2	53.4				
110	180	177	173	168	164	158	152	146	139	131	122	111	102	96.6	98.3				
115	226	222	217	212	206	200	193	187	179	172	162	151	144	142	146				
120	272	267	262	256	250	244	238	231	224	212	202	194	190	190	196				
125	318	313	308	302	296	290	284	273	262	252	244	239	237	240	247				
130	365	360	355	349	342	331	320	311	302	294	288	285	286	290	298				
135	408	401	392	384	375	366	357	349	342	337	333	332	335	340	349				
140	436	429	422	415	408	401	394	388	383	380	379	379	383	388	397				
145	463	458	453	447	442	436	432	428	425	423	423	425	429	436	445				
150	491	487	483	479	475	472	469	467	465	465	467	469	474	480	489				
155	519	516	513	510	508	506	505	504	505	505	508	511	516	522	530				
160	547	545	543	542	540	540	539	540	541	543	546	550	555	560	567				
165	575	574	573	572	572	572	573	573	575	577	580	583	587	592	598				
170	603	602	602	602	602	603	604	605	606	608	611	613	617	620	624				
175	630	631	631	631	631	632	632	633	634	635	637	638	640	642	644				
180	657	657	657	657	657	657	657	657	657	657	657	657	657	657	657				

C Range: 0 - 360DEG
C Interval: 5.0DEG
Test Speed: HIGH
Temperature:26.3DEG
Operators:Ethan
Test Date:2021-10-07

γ Range: 0 - 180DEG
γ Interval: 0.5DEG
Test System:EVERFINE GO-2000B_V1 SYSTEM V2.0.268
Humidity:36%
Test Distance:6.770m [K=1.0000]
Remarks: E款 5:5
0:10 源磊A+档